

# ANUSHA

*Green Valley*

AK Constructions  
*....quality being the bench mark*



# ANUSHA

*Green Valley*



# AK Constructions

*....quality being the bench mark*



130'-0" WIDE ROAD

NORTH



1130

1045



6'-0" W I D E R O A D

1075

1075



7'-0" W I D E R O A D

1015

1015



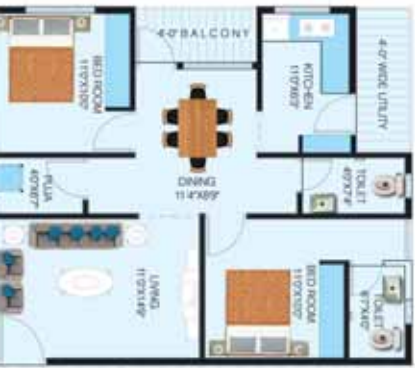
7'-0" W I D E R O A D

955

1015



1075



1075



1075



7-4 W I D E C O R K I D O R

UP

1015



1015



1015



1015

1015

1015

1015

1015

1015

1015

1015

1015

1015

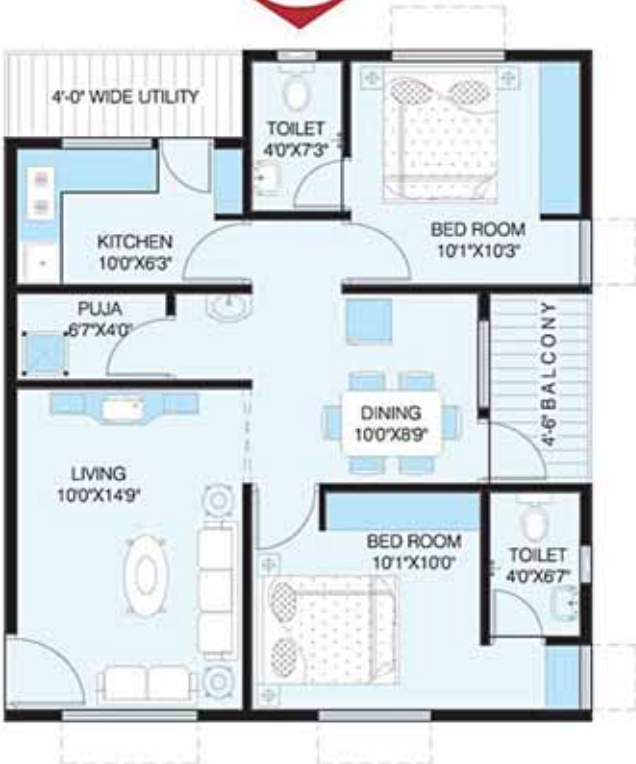
7-4 W I D E C O R K I D O R

UP

PERSPECTIVE VIEW



1015



1015



## SPECIFICATIONS

<b>ANALYSIS</b>	Soil Analysis tests for structural strength, ground water by geological surveyors.
<b>STRUCTURE</b>	RCC Framed structure.
<b>WALLS</b>	Brick walls with cement mortar of 6"th. External walls and 4" th. internal walls (Light weight Red Clay bricks).
<b>DOORS</b>	
a. Main Door	Teak wood frame and Teak wood paneled shutter door.
b. Internal Doors	Frames with well seasoned wood and water resistant flush doors of standard make and Water proof Flush Doors will be provided for bathrooms.
<b>WINDOWS</b>	Aluminium Sliding windows with White pin headed glass & M.S. safety grills.
<b>ELECTRICAL</b>	Concealed copper wiring with sufficient points shall be provided for all rooms. (Provision for water purifier, A.C., Mixer, Fridge, Geyser and other Internal points).
<b>CABLE TV</b>	Provision for cable connection
<b>FLOORING</b>	24" x 24" Vetrificetiles for Living, Dining, Bedroom and Kitchen.
<b>TOILETS</b>	Glazed ceramic tiles dado upto 5'-0" height with white sanitary and concealed piping along with CP fittings.
<b>KITCHEN</b>	Green Marble Cooking Platform with sink and glazed ceramic tiles dado upto 2V2 feet height above the platform. Provision for cabinets.
<b>UTILITIES</b>	Provision for washing machine
<b>PAINTINGS</b>	External: Two coats of Emulsion paint Internal : Two coats of Emulsion of standard make.
<b>LIFT</b>	Four No's of high speed passenger lifts with V3F facility for energy efficiency.
<b>WATERSUPPLY</b>	Round the clock water supply from borewell.

Note : APSEB, MCV Water, UGD, Car Parking, Sales Tax, Service Tax, Registration Charges are extra



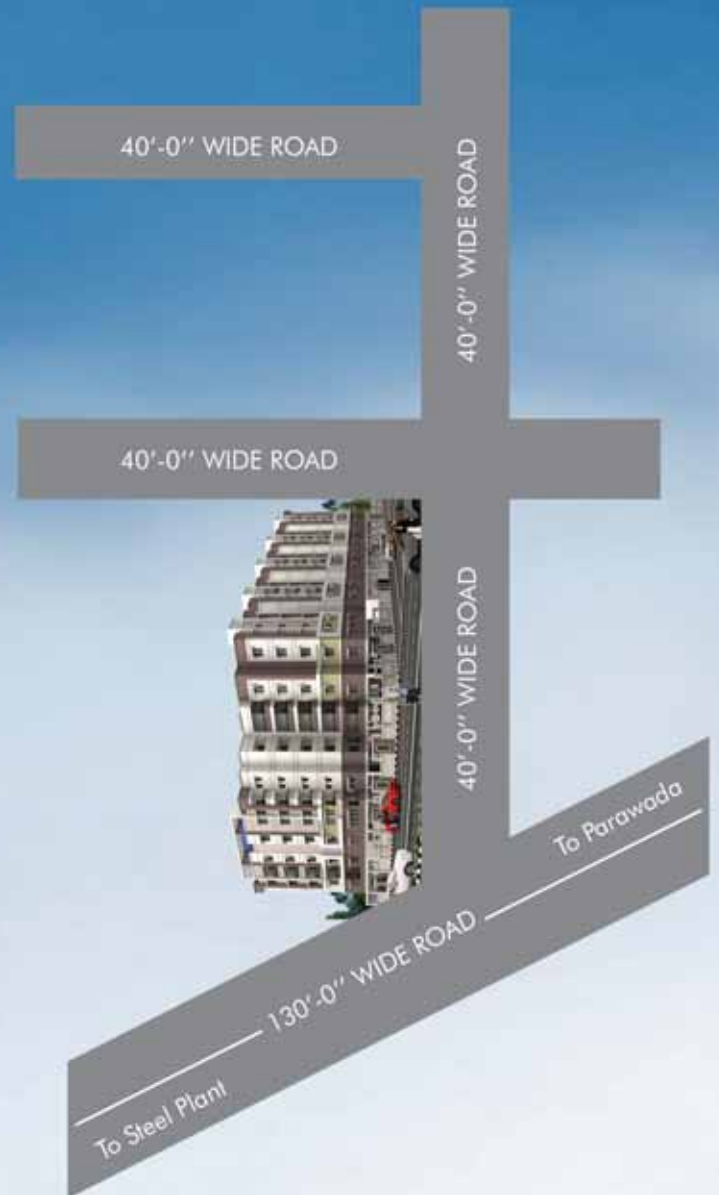
## SALIENT FEATURES

- Eesanyam extended VUDA approved site in well developed residential locality.
- Set in quite, calm and pollution free environment.
- Exceptional potential for rentals and value appreciation.
- Designed with beautiful architecture and the use of modern space planning techniques.
- 100% VAASTHU, No common walls, sufficient cross ventilation.
- Site with clear title. Home loans can be arranged by leading banks and financial institutions.
- Ample car parking
- Near to Banks, Schools and reputed colleges.

## PROMOTERS TRACK RECORD

- 10+ years of experience in this field
- 10+ projects successfully completed
- 150+ satisfied customers
- 1,50,000+ sft of construction completed
- 2,00,000+ sft under construction

## LOCATION PLAN



*Exclusively marketed by*  
**RE/MAX**

#47-7-26, 3rd Floor,  
Sree Kanya Arcade, 4th Lane,  
Dwarakanagar, Visakhapatnam-16.  
(M) : +91 9885357357, 8125357357,  
(W) www.remax.in